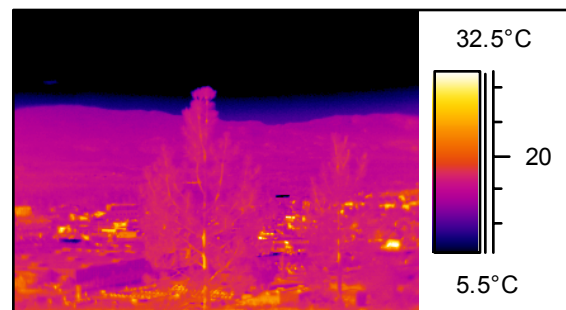


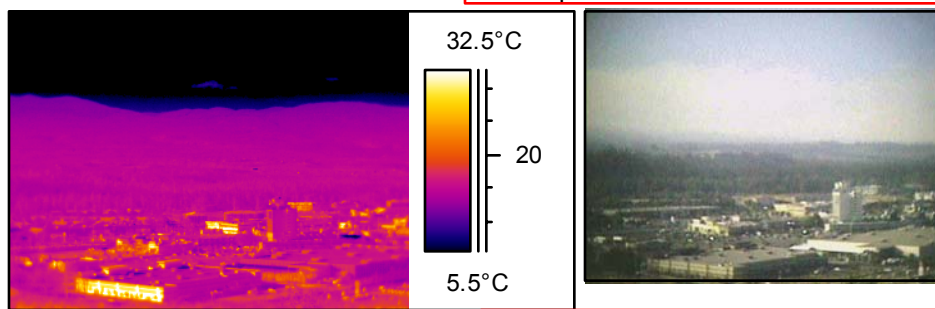
IR information	Value
Date of creation	28/08/2003
Time of creation	8:38:44 AM

Images taken from Dilworth Drive. You can see the corner of the lake (darker area) in the Mission by the white arrow. We panned left (east) to Hwy. 33 in a sequence shown here.



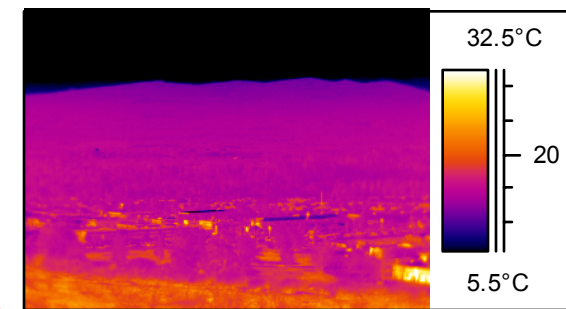
IR information	Value
Date of creation	28/08/2003
Time of creation	8:39:00 AM

The heat you are seeing is the heat created by urban development. Use the zoom features on the free viewer to magnify the hills behind Kelowna.



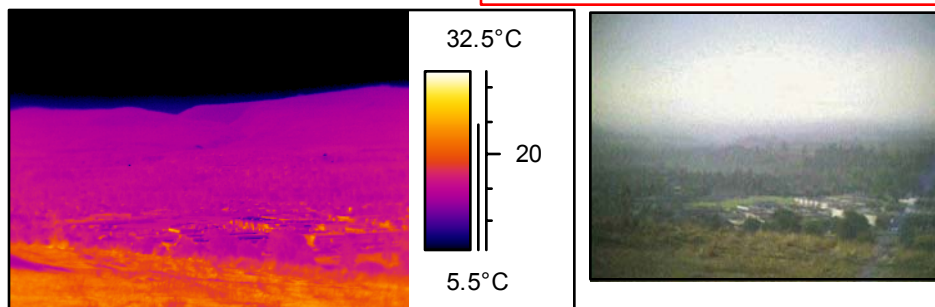
IR information	Value
Date of creation	28/08/2003
Time of creation	8:39:19 AM

These images measure surface temperature. You can see the fire is not raging across the crown of trees. It is active on the ground and out of sight from these angles.



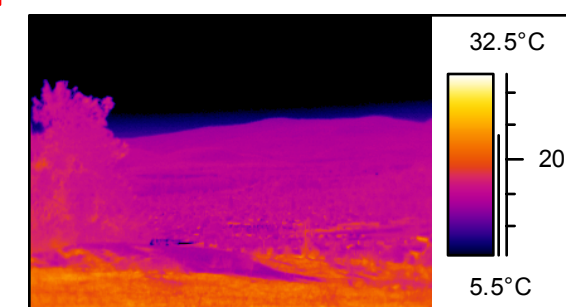
IR information	Value
Date of creation	28/08/2003
Time of creation	8:39:36 AM

This is further east from the mission and you can see through the smoke that the fire is not active in the tree tops.



IR information	Value
Date of creation	28/08/2003
Time of creation	8:39:56 AM

This image is south of Dilworth Drive, further east of the mission and again, no tree top fires as the wind is not gusting.



IR information	Value
Date of creation	28/08/2003
Time of creation	8:40:16 AM

This is the last part of the sequence and the furthest east from the mission. Use the zoom features and check the hillsides through the smoke.