

Infrared is measuring surface temperature so hot areas on the ground can not be seen as well as if we were above the fire. You can see the fire through the smoke at the top of the hill. The brighter color in front of the smoke is not heat from the fire, it is from the solar radiation of the day.

Where there is smoke, there is fire so use the visual image for reference.

The skies are darker in color because their temperature is lower than the temperature span used to present this information.

Water Bombing

IR information	Value
Date of creation	07/09/2003
Time of creation	4:15:19 PM

Fire Retardant Line

IR information	Value
Date of creation	07/09/2003
Time of creation	5:05:58 PM

The images above were taken from Dilworth Drive looking south on a day when the water bombers were working hard.

We are using zoom features in the infrared images because you can see in the real time picture the distance we are imaging is several kilometers.

The image top left is showing the area where a water bomber has just released the water and the water has not hit the ground yet.

The image top right is to the right of the image top left. The arrow pointing straight down is showing a water bomber through the smoke just above the horizon.

The diagonal arrows are showing where helicopters were dropping fire retardant along a line. Imaging from above the fire would see the fire through any smoke.

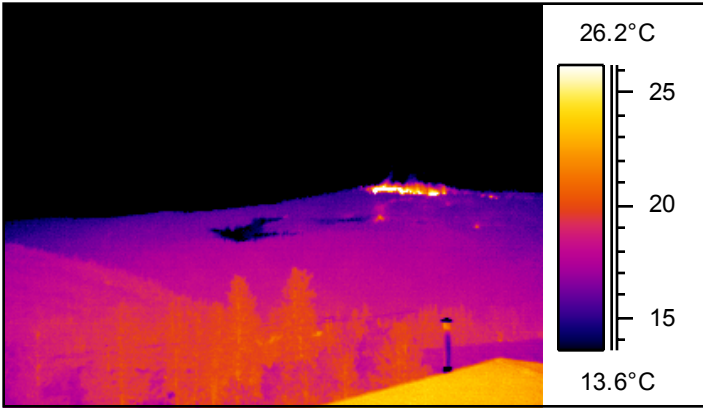
Water and retardant drops could be seen, imaged, recorded and documented.

You would see the width of the bombing runs as well as the effect the water bombing had on the area.

The next page shows the Mars Bomber in action and the third page shows a 12 image sequence of 10 minutes of water bombing. The images in the sequence were taken from Hwy. 33 in Black Mountain, next to the school.

[Use the zoom feature of the viewer to magnify the images.](#)

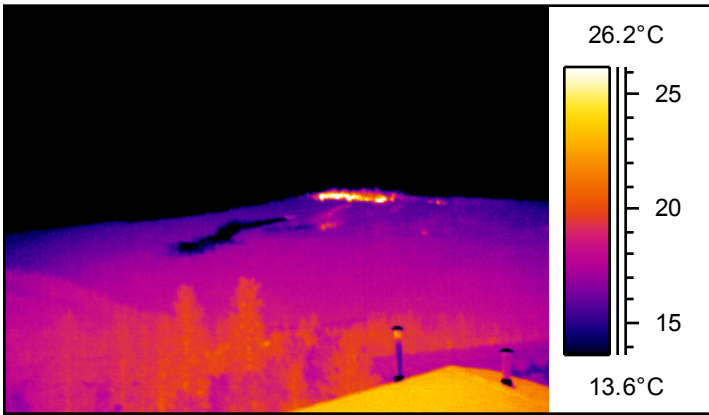
"Bringing the Invisible to Light"



IR information	Value
Date of creation	07/09/2003
Time of creation	5:50:14 PM

IR information	Value
File name	D0907-63.img
Camera lens	12

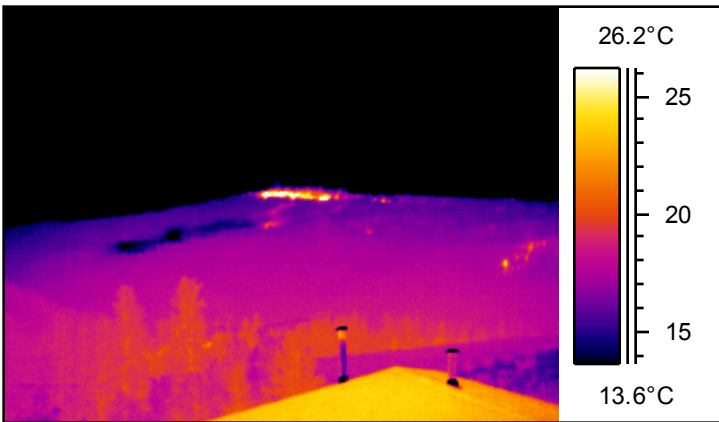
Hwy 33, Water Bombing Pattern



IR information	Value
Date of creation	07/09/2003
Time of creation	5:53:30 PM

IR information	Value
File name	D0907-64.img
Camera lens	12

Hwy 33, Mars Bomber Pattern

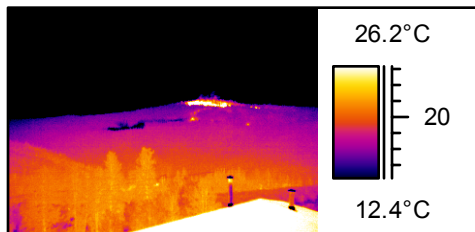


IR information	Value
Date of creation	07/09/2003
Time of creation	5:53:37 PM

IR information	Value
File name	D0907-65.img
Camera lens	12

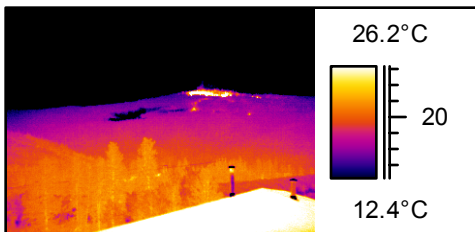
Hwy 33, Mars Bomber Pattern, 7 Seconds Later

Water Bombing Over 10 Minute Span



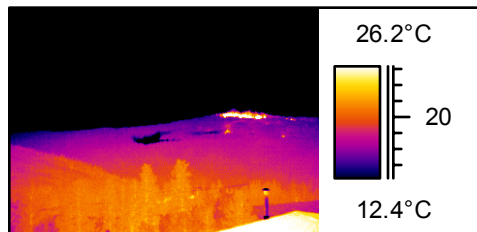
Sept. 7 2003
5:49:08 PM

Water Bombing Line



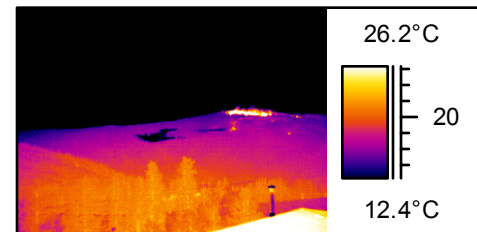
Sept. 7 2003
5:49:25 PM

Water Bombing Line



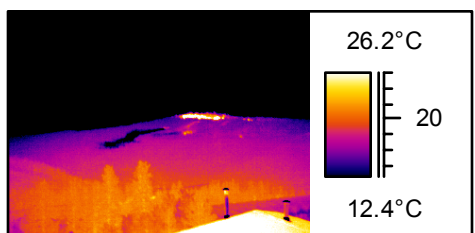
Sept. 7 2003
5:50:03 PM

Water Bombing Line



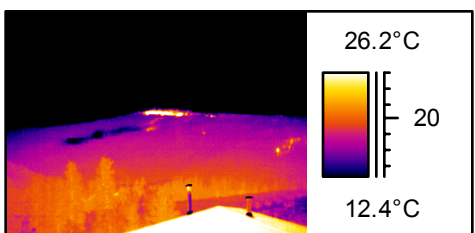
Sept. 7 2003
5:50:14 PM

Water Bombing Line



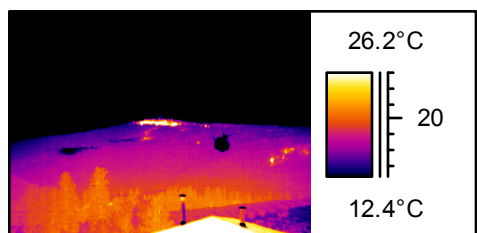
Sept. 7 2003
5:53:30 PM

Mars Water Bombing



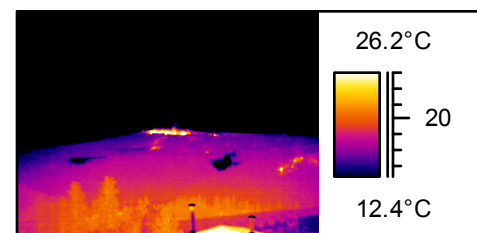
Sept. 7 2003
5:53:37 PM

Mars Water Bombing Pattern



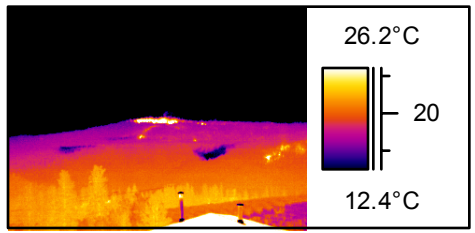
Sept. 7 2003
5:55:39 PM

Water Bombing New Line



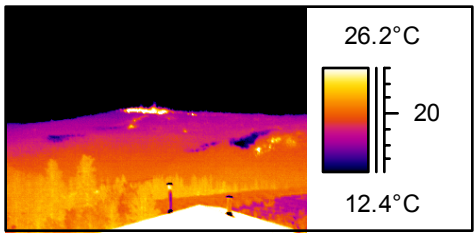
Sept. 7 2003
5:56:05 PM

Water Bombing New Line



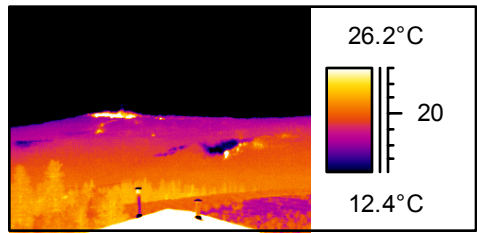
Sept. 7 2003
5:58:02 PM

Water Bombing New Line



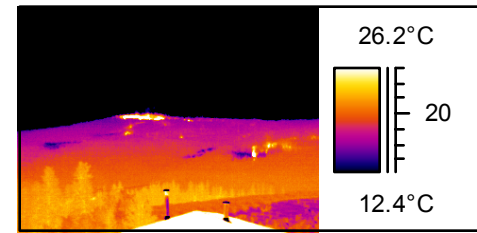
Sept. 7 2003
5:58:25 PM

Water Bombing New Line



Sept. 7 2003
5:58:50 PM

Water Bombing New Line



Sept. 7 2003
5:58:59 PM

Water Bombing New Line