

IR information	Value
Date of creation	03/09/2003
Time of creation	8:39:13 AM
File name	D0903-01.img
Object parameter	Value
Atmospheric temperature	18.0°C
Relative humidity	0.35



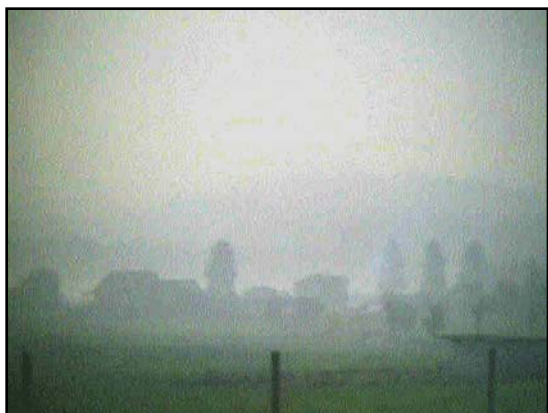
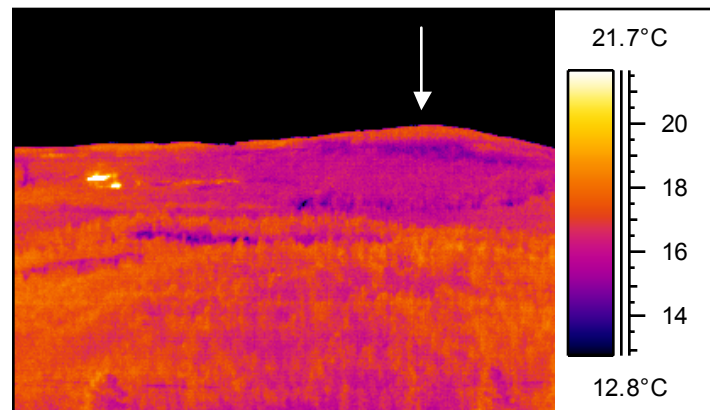
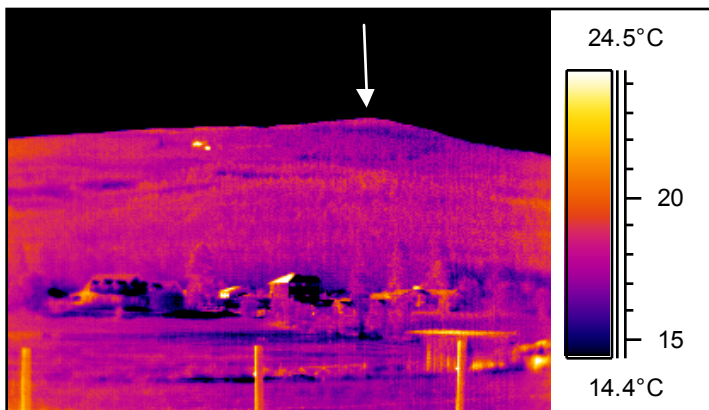
Image taken from Dilworth Drive with Kelowna in the forefront and smoke blocking view of the hills.

The arrow is showing hotspots at the crest of the hill and 2 closer to us.

There isn't lots of fire activity to view, these are to allow you to see beyond the smoke. Silk FM and Castanet.net want to give their audience piece of mind seeing beyond the smoke and it is a pleasure to assist.

Use the zoom features of the viewer for a closer look at the hill and reference other images posted to see the incredible differences when the fire is flaring and above the trees versus today.

" Bringing the Invisible to Light "



24 degree Lens

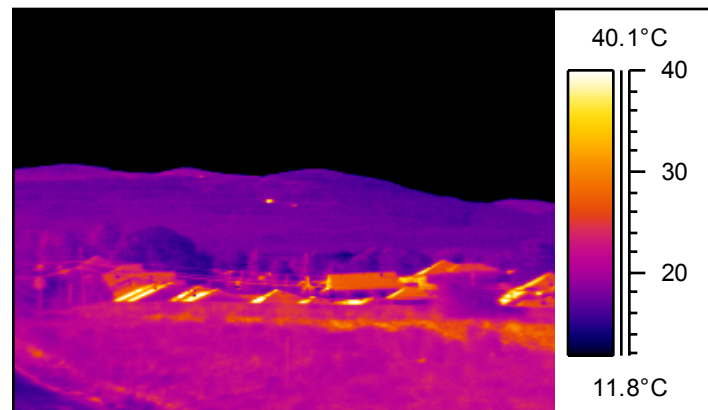
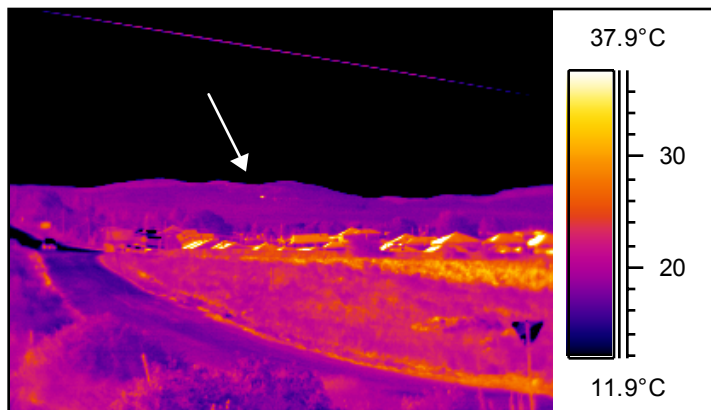
12 degree Lens

IR information	Value
Date of creation	03/09/2003
Time of creation	8:52:54 AM
File name	D0903-03.img
Object parameter	Value
Atmospheric temperature	18.0°C
Relative humidity	0.35

IR information	Value
Date of creation	03/09/2003
Time of creation	8:53:54 AM
File name	D0903-05.img
Object parameter	Value
Atmospheric temperature	18.0°C
Relative humidity	0.35

These images are of the same area, the one on the right offers a closer look. The arrows are to reference the hill from the Sept. 1 document when the fire flared up over night as these images were taken from the same location. Visibility is poor as you can see by the visual images below the thermogram. This view is taken at the intersection of Saucier and Stewart Rd. E facing Stewart Rd. East and Bedford behind us.

" Bringing the Invisible to Light "



24 degree Lens

Telephoto Lens

IR information	Value
Date of creation	03/09/2003
Time of creation	9:35:09 AM
File name	D0903-09.img
Object parameter	Value
Atmospheric temperature	19.0°C
Relative humidity	0.35

IR information	Value
Date of creation	03/09/2003
Time of creation	9:36:34 AM
File name	D0903-11.img
Object parameter	Value
Atmospheric temperature	19.0°C
Relative humidity	0.35

These images were taken in Rutland and directly in front of us is where McKenzie Rd. meets Hwy. 33. We are facing South and a little East.

The hot spots closer to us are the shingled roofs with the east exposure. The UV on a smoky day still heats the asphalt shingles beyond design temperatures of the residences. When you are in a home in the summer and the heat indoors is warmer than the outside temperature, the UV is a contributor that requires the attention of Architects and Engineers. Residents are purchasing air-conditioning to treat heat symptoms and this creates more demand of electricity.

The white arrow shows a hot spot and the image on the right shows a close up of those hotspots.

" Bringing the Invisible to Light "