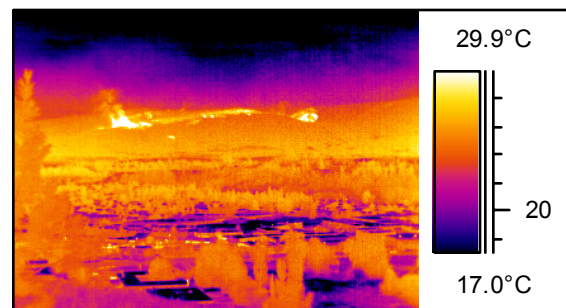


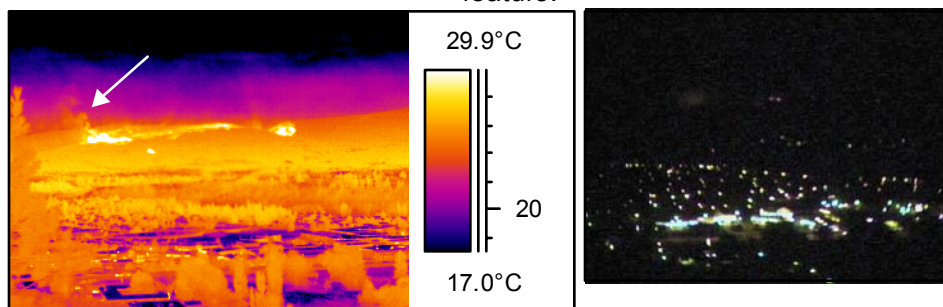
IR information	Value
Date of creation	06/09/2003
Time of creation	10:55:19 AM

This image was taken from Dilworth Drive looking South yesterday morning and shows the heated air above the hill from the fire below. Use the zoom feature.



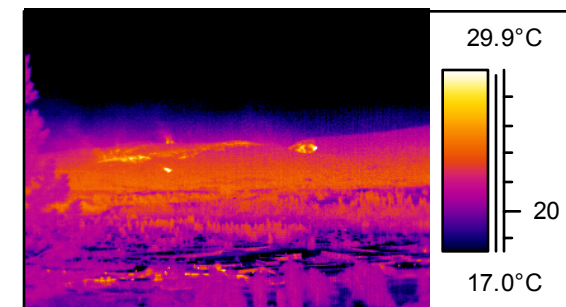
IR information	Value
Date of creation	07/09/2003
Time of creation	3:29:03 AM

This image is of the same area the next morning as you can see by the time and date displayed to the left.



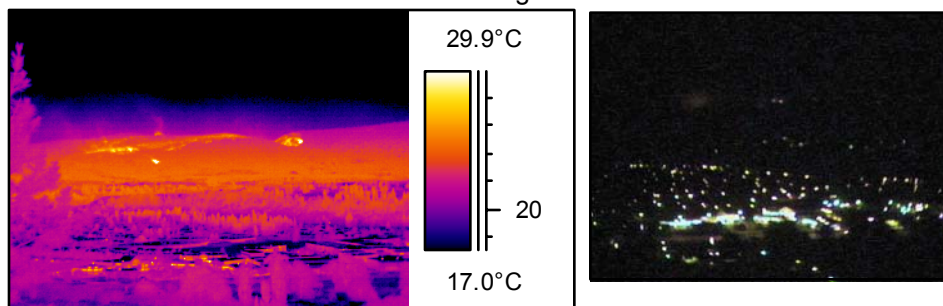
IR information	Value
Date of creation	07/09/2003
Time of creation	3:32:00 AM

Stronger winds as you can see the heated air leaning East(left) We left for a few images from a different angle. It started to rain on the way and the image after the rain is next.



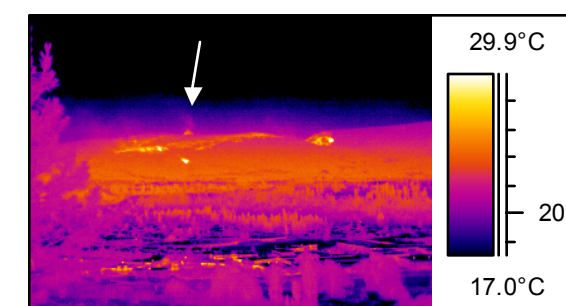
IR information	Value
Date of creation	07/09/2003
Time of creation	4:34:54 AM

This image and the one to the left were taken an hour apart and have exactly the same settings. It has rained and you can see the effects on the landscape and fire. \* next page



IR information	Value
Date of creation	07/09/2003
Time of creation	4:37:36 AM

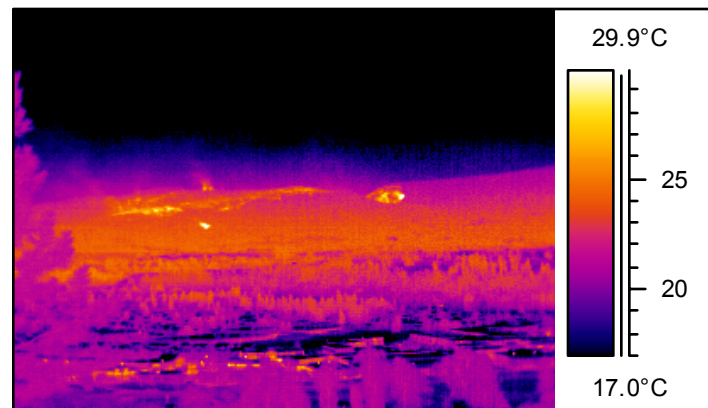
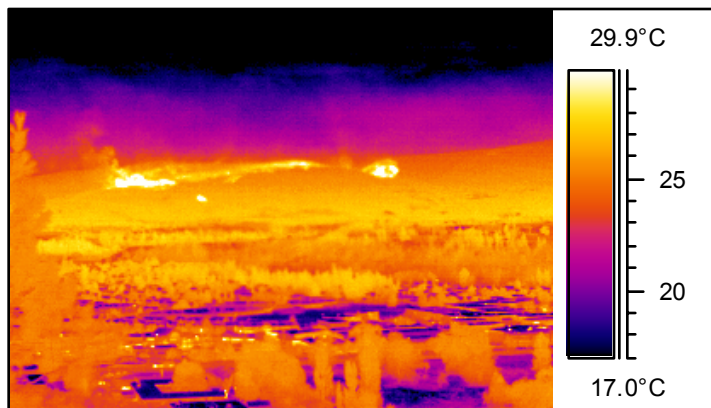
The image above is before the rain and this after, you can see the trees are cooler as is the landscape over a large area. The fire has been knocked down a little as well.



IR information	Value
Date of creation	07/09/2003
Time of creation	4:37:40 AM

This image is to draw your attention to a plume of heat that is growing.





### Before Rainfall

### After Rainfall

IR information	Value
Date of creation	07/09/2003
Time of creation	3:32:00 AM

IR information	Value
Date of creation	07/09/2003
Time of creation	4:34:54 AM

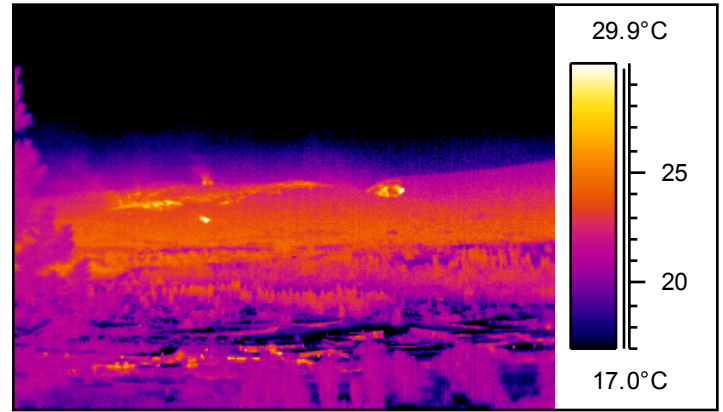
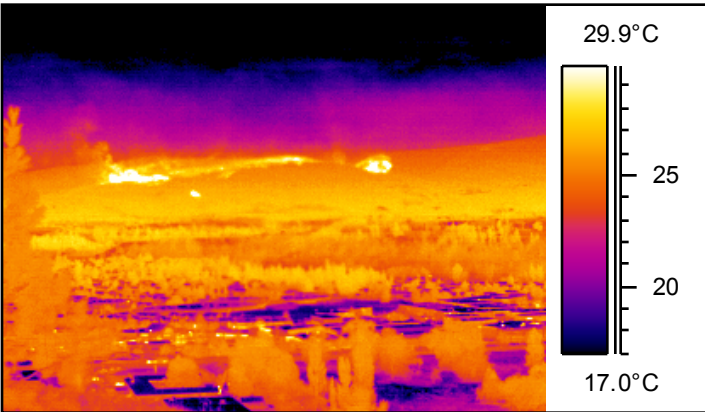
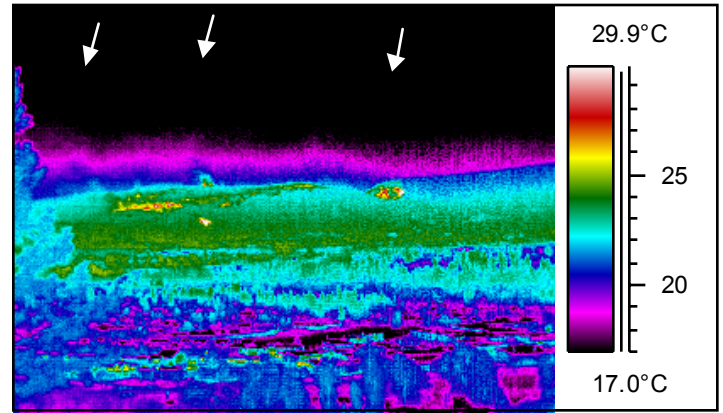
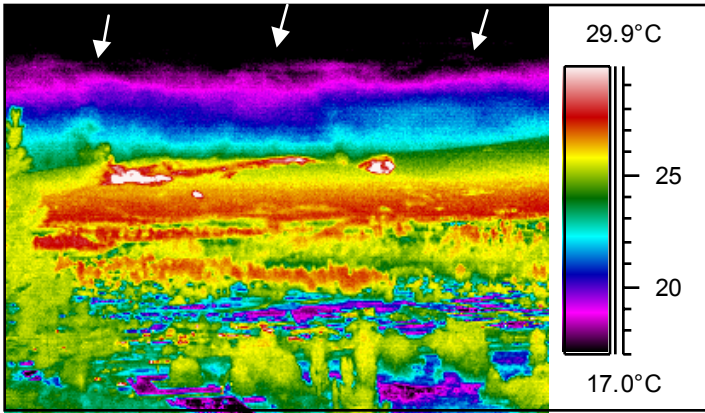
The image on the left was taken just after 3:30 in the morning and then we left to take a few images from a different angle. It started to rain along the way and however brief, we hoped the fire area got considerable more.

We returned to the same spot on Dilworth Drive an hour later and the image top right is the image taken after the rain. The settings of the equipment are exactly the same in both images so you can make reference to the temperature changes by color alone. The image, top right shows the affected area of the rain as well as the effects on the fire. The landscape is cooler from the rain and the fire has been slowed.

Observe the differences in heated air above the fire in the before and after images.

The next page contains the exact images, same settings only the presentation has been changed so we can look at the differences in the atmospheric temperatures above the fire. There will be a palette change called a rain palette. This palette allows you to see subtle differences in temperature. Always use the scale to the right for reference, the next page uses a red color, this does not imply the hills are ablaze.

The page and the colors on it make the page appear to be busy but the important thing to remember is we are looking at temperature. All temperature has a source and this palette shows thermal gradients from a source.



The picture to the left is what we see at 3:30 in the morning.

**Before Rainfall**

**After Rainfall**

IR information	Value
Date of creation	07/09/2003
Time of creation	3:32:00 AM

IR information	Value
Date of creation	07/09/2003
Time of creation	4:34:54 AM

The previous page explains the reasoning for this page. The scales and settings are the same with the images being taken 1 hour apart. The top images are in a Rain Palette and the ones underneath are done in an Iron Palette. The scales are the same, we are looking for subtle temperature differences and to display that.

You can see the heated air above the fire in the image top left and you can see the effect of the rain in the image to top right.

It is amazing to see the affected area of the rain as well as the heat it took away from the fire.